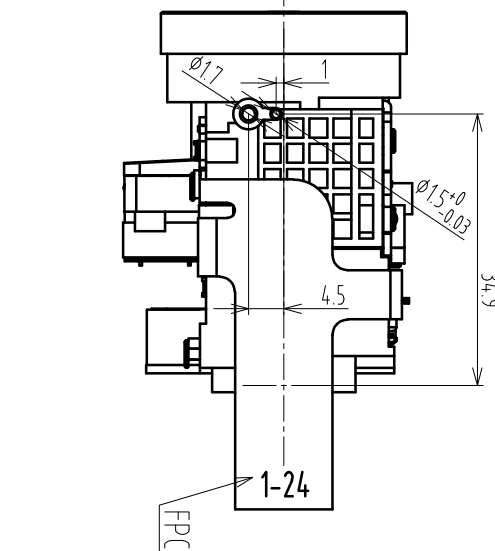
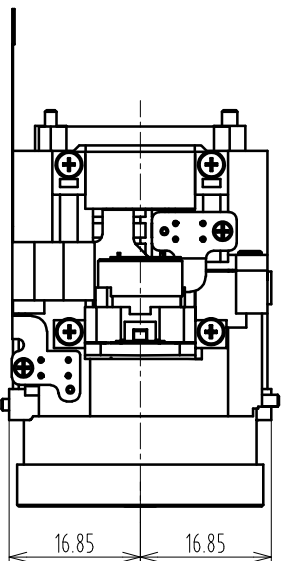
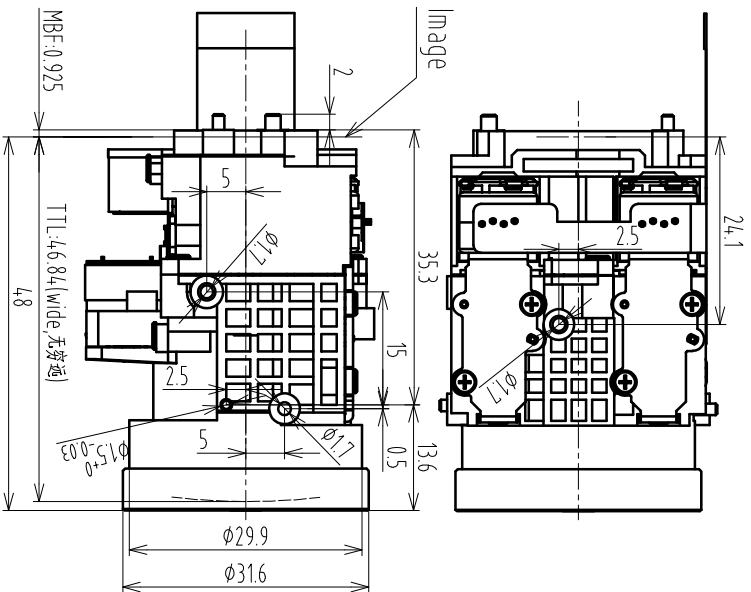
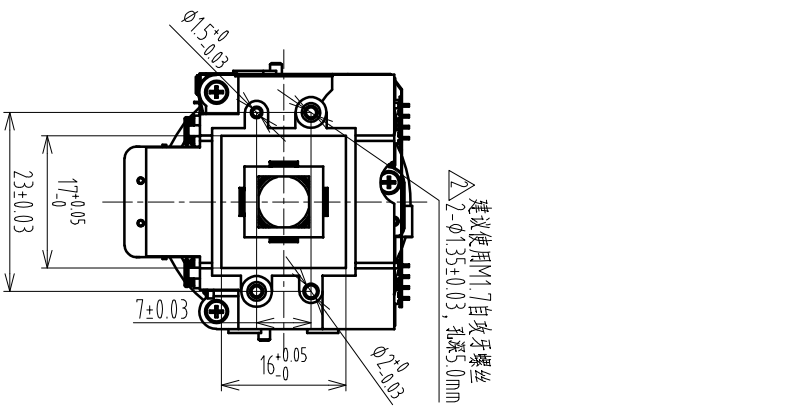


CL0206A 3.5X SPEC



NO.	引脚定义	NO.	引脚定义
1	IR -	13	Iris Drive +
2	IR +	14	Focus Reset P1(cathode)
3	Zooming Reset P1(cathode)	15	Focus Reset P1(emitter)
4	Zooming Reset P1(anode, collector)	16	Focus Reset P1(anode, collector)
5	Zooming Reset P1(emitter)	17	Zoom Motor A +
6	Iris Cont +	18	Zoom Motor B -
7	Iris Cont -	19	Zoom Motor A -
8	Iris Drive -	20	Zoom Motor B +
9	Hall Input -	21	Focus Motor A +
10	Hall Output -	22	Focus Motor A -
11	Hall Input +	23	Focus Motor B +
12	Hall Output +	24	Focus Motor B -

主要参数		TTL	
Image sensor	1/2.7"(CD or CMOS)	Image circle	46.84mm(in air)
Image circle	φ6.6mm	FOV	Wide-D:132° Tele-D:41°
Lens structure	2 groups 8 glass elements	Relative illumination	Wide>4.0%~Tele>70%
EFL	2.9Wide~10.0(Tele)±10%/mm	CRA	Wide<6° Tele<8°
Zoom ratio	3.5X	R cut specification	645nm±10nm wavelength of cut off 50% (With IR cut switch filter)
F/#	16±5%	TV Distortion	Wide<25% Tele<25% 1 field 3mm
Working Distance(mm)	Wide 0.5m Tele 1m		
IRL	>5mm		

标记	处数	更改文件号	担当	变更日期	批准	名称	单位	比例
△	2	WEI	WEI	2016-06-01	设计	3.5X CCTV LENS	mm	1:1
▽	2	WEI	WEI	2015-03-20	审核	CL0206A SPEC		1/1
								V2

TOLERANCE:		三角法	
LINEARITY TOLERANCES	±0.05	△	0.05
ANGULAR TOLERANCES	ARE±30'	▽	0.30
DRAFT ANGLES	AREA±45°/SIDE		