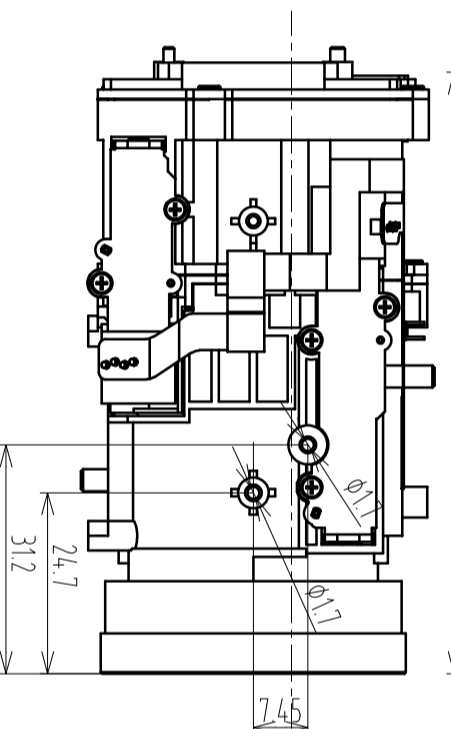
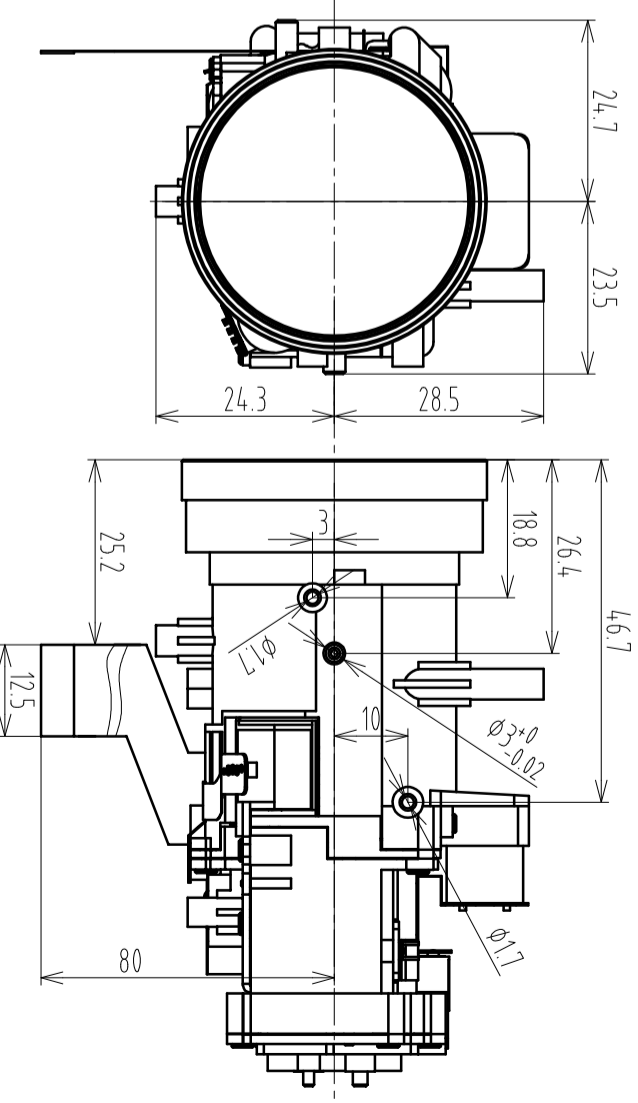
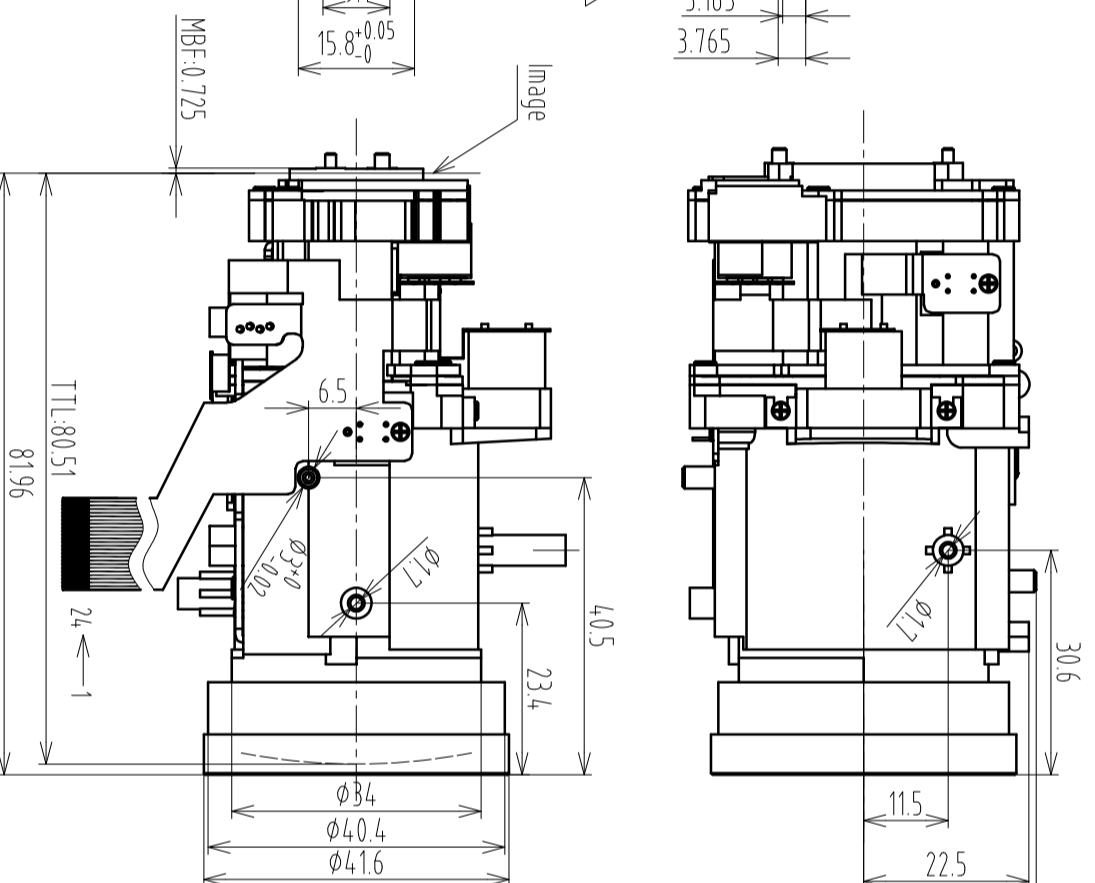
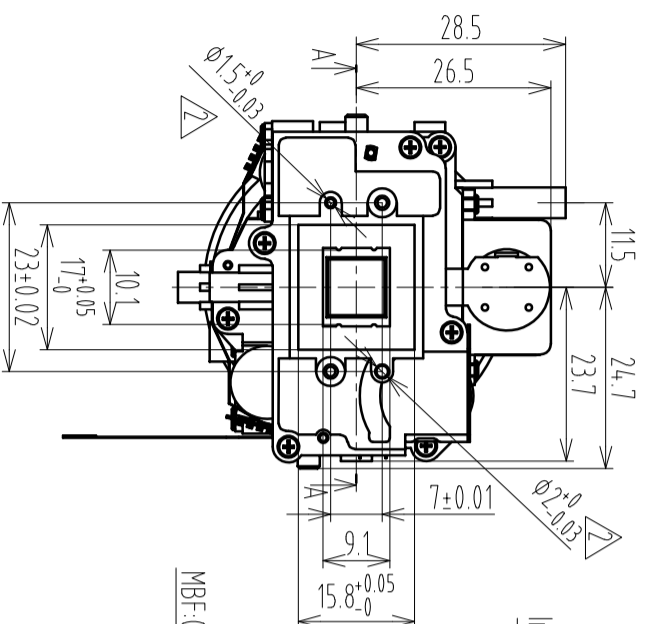
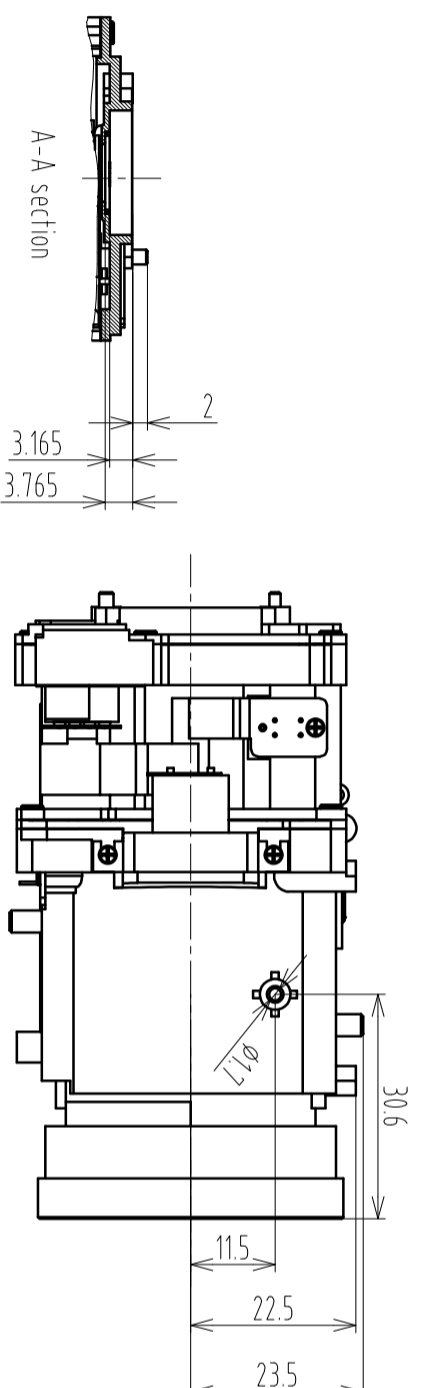


CL0203A 20X CCTV LENS SPEC.



NO.	PIN Definition	NO.	PIN Definition
1	Zooming Reset P[(Cathode)]	13	Focus Reset P[(Emitter)]
2	Zooming Reset P[(Emitter)]	14	Focus Reset P[(Anodee,Collector)]
3	Zooming Reset P[(Anodee,Collector)]	15	IR CUT Motor -
4	Iris Drive +	16	IR CUT Motor +
5	Iris Cont +	17	Focus Motor B +
6	Hall Output +	18	Focus Motor A -
7	Hall Input +	19	Focus Motor B -
8	Hall Output -	20	Focus Motor A +
9	Hall Input -	21	Zoom Motor A +
10	Iris Cont -	22	Zoom Motor B +
11	Iris Drive -	23	Zoom Motor A -
12	Focus Reset P[(cathode)]	24	Zoom Motor B -

TOLERANCE:		三角法	
LINEARITY TOLERANCES +0.05		材料(环架)	
ANGULAR TOLERANCES ARE±30°		-----	
DRAFT ANGLES ARE±0.5°/SIDE		mm	
设计	Wei	2013-07-02	名称
校对			20X CCTV LENS
审核			CL0203A SPEC
批准			版本
			V2

主要参数		TTL	
Image sensor	1/2.7"(CCD or CMOS)	Wide-D:72°/H:55.5°/V:43	80.5mm(in air)
Image circle	φ6.7mm	tele-D:3.8°/H:3.0°/V:2.2	
Lens structure	5 groups 14 glass elements(1 glass Aspherical)	Wide>4.0°~Tele>65%	
EFL	4.7Wide/~94(Tele)±5%/mm	Wide<2.1° Tele<18°	
Zoom ratio	20X	Relative illumination	
F/#:	1.6(wide)~3.0(tele)±5%; ∞	CRA	
Working Distance(mm)	Wide:0.2m Tele:1m	IR cut specification	
BFL	5.5mm in air	TV Distortion	
		Wide:-2.0% Tele:1.0% 1 field 3.3mm	

标记	处数	更改文件号	担当	变更日期	批准
2	3	--	Wei	2013-07-02	
1	1	--	Wei	2013-06-04	